

Supplementary materials for the article:

**Campos-Múzquiz L.G. et al.** *Campylobacter fetus* is internalized by bovine endometrial epithelial cells.

Pol J Microbiol. 2019, Vol. 68, No 2, 217–224.

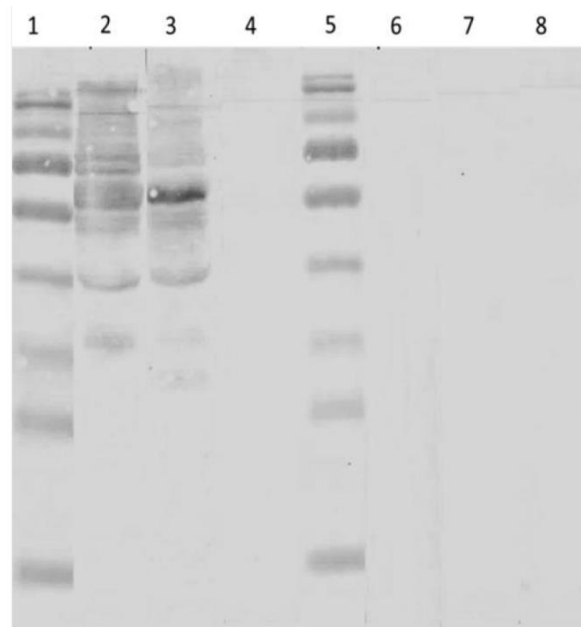


Fig. S1. Western blot of *C. fetus* proteins (lanes 2 to 4) and epithelial cells proteins from bovine endometrium (lanes 6 to 8). Lanes 1 and 5, PAGE ruler (Fermentas). Lanes 2 and 6, anti-*C. fetus* non-adsorbed serum. Lanes 3 and 7, anti-*C. fetus* adsorbed serum and lanes 4 and 8, anti-rabbit HRP antibodies.