

Supplementary materials for the article:

Edward E.A. et al. Resensitization of Fluconazole-Resistant Urinary *Candida* spp. Isolates by Amikacin through Downregulation of Efflux Pump Genes
Pol J Microbiol. 2020, Vol. 69, No 1, 73–84.

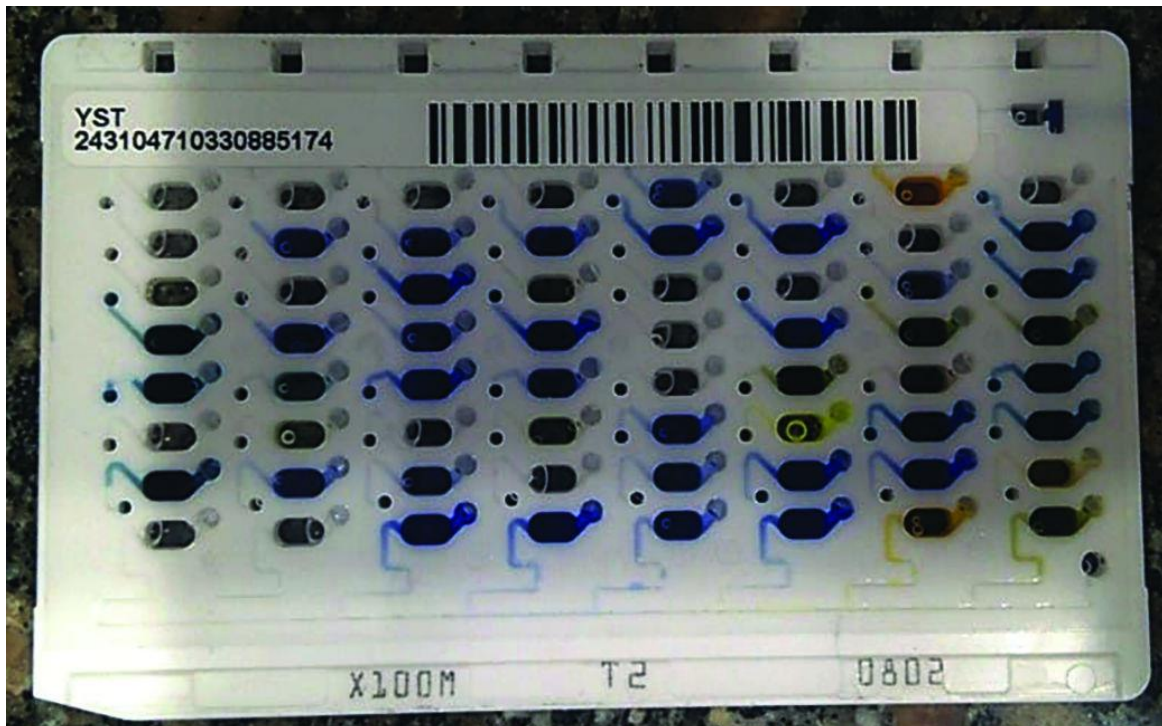


Fig. S1. Identification of *Candida tropicalis* clinical isolates using the Vitek-2 system.

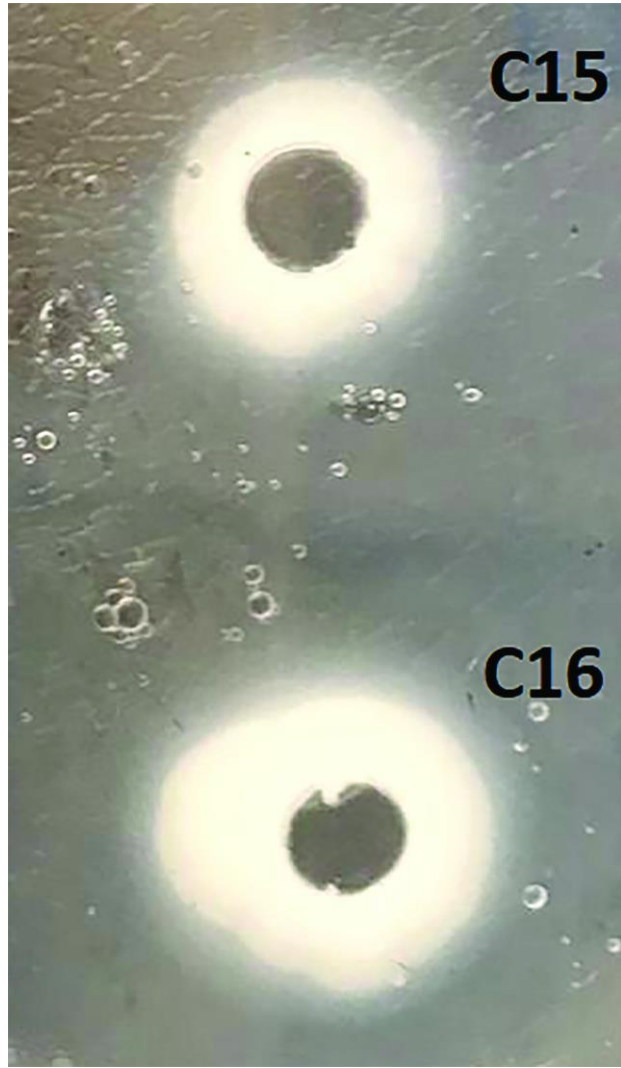


Fig. S2. Phospholipase activity of two *Candida albicans* isolates. Both of the isolates are strong phospholipase producers.

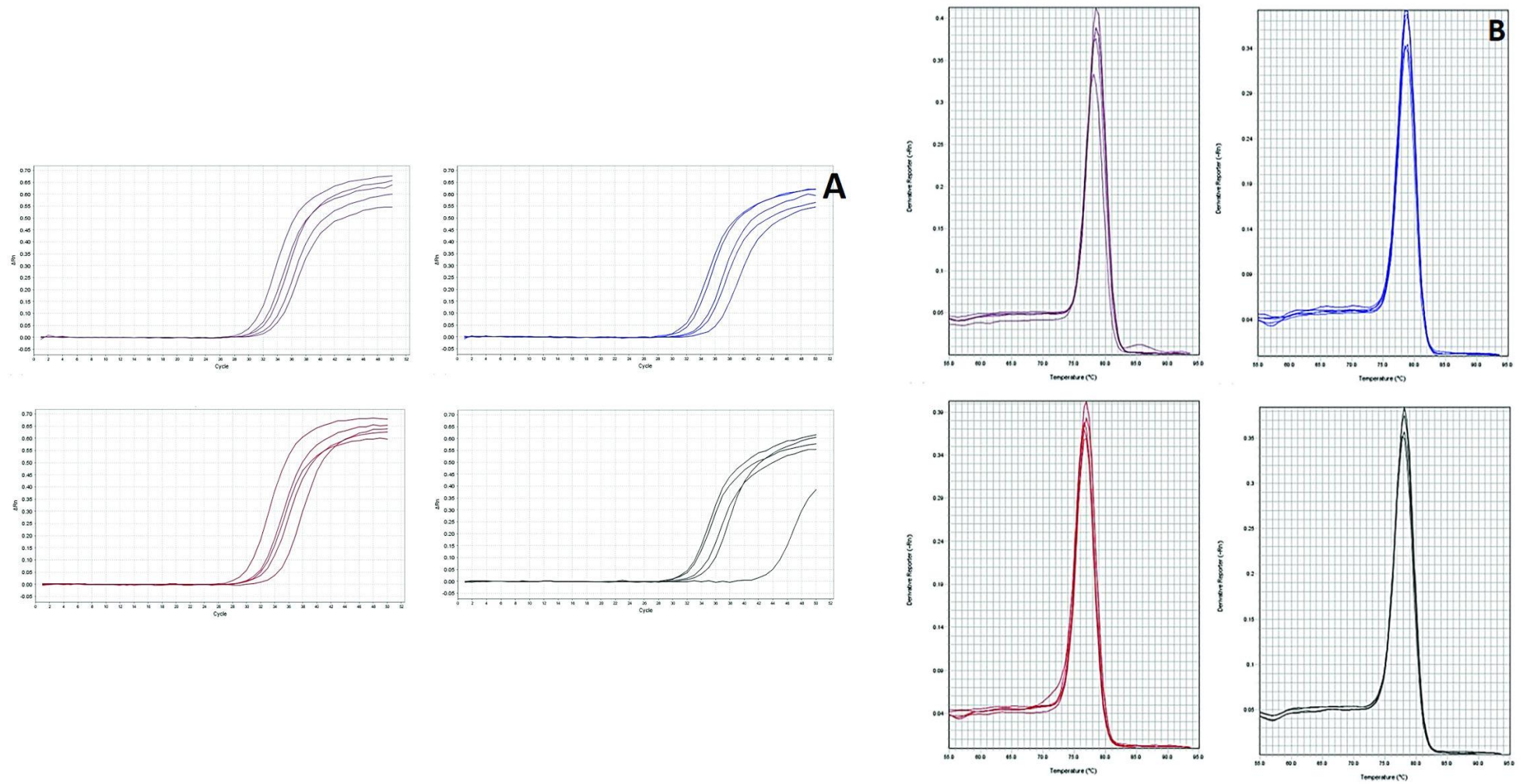


Fig. S3. Representative (A) amplification curves and (B) melting curve analysis for the housekeeping gene *ACT1* and the efflux pump genes *CDR1*, *CDR2*, and *MDR1* of *Candida albicans* isolate C6.