

Supplementary materials for the article:

Wei M. et al. Rapid Detection and Differentiation of KPC and MBL Carbapenemases among Enterobacterales Isolates by a Modified Combined-Disk Test

Pol J Microbiol. 2021, Vol. 70, No 3, 387–394.

Table SI

Primers for the detection of carbapenemase-producing Enterobacterales in this study.

Carbapenemase gene	Primer sequences (5'-3') ^a	Fragment size (bp)
<i>bla_{KPC}</i>	CGTCTAGTTCTGCTGTCTTG	798
	CTTGTCATCCTTGTTAGGCG	
<i>bla_{NMC}</i>	GCATTGATATACCTTTAGCAGAGA	2,158
	CGGTGATAAAATCACACTGAGCATA	
<i>bla_{SME}</i>	AGATAGTAAATTTTATAG	1,138
	CTCTAACGCTAATAG	
<i>bla_{IMI}</i>	ATAGCCATCCTTGTTTAGCTC	818
	TCTGCGATTACTTTATCCTC	
<i>bla_{GES}</i>	GTTTTGCAATGTGCTCAACG	371
	TGCCATAGCAATAGGCGTAG	
<i>bla_{IMP}</i>	GAAGGCGTTTATGTTTCATAC	587
	GTACGTTTCAAGAGTGATGC	
<i>bla_{NDM}</i>	GCAGCTTGTCGGCCATGCGGGC	782
	GGTCGCGAAGCTGAGCACCGCAT	
<i>bla_{VIM}</i>	GTTTGGTCGCATATCGCAAC	389
	AATGCGCAGCACCAGGATAG	
<i>bla_{SPM}</i>	CCTACAATCTAACGGCGACC	650
	TCGCCGTGTCCAGGTATAAC	
<i>bla_{GIM}</i>	AGAACCTTGACCGAACGCAG	748
	ACTCATGACTCCTCACGAGG	
<i>bla_{SIM}</i>	TACAAGGGATTCGGCATCG	571
	TAATGGCCTGTTCCCATGTG	
<i>bla_{OXA-48-like}</i>	TTGGTGGCATCGATTATCGG	744
	GAGCACTTCTTTTGTGATGGC	

^a – the first and second primers for each gene are forward and reverse primers, respectively

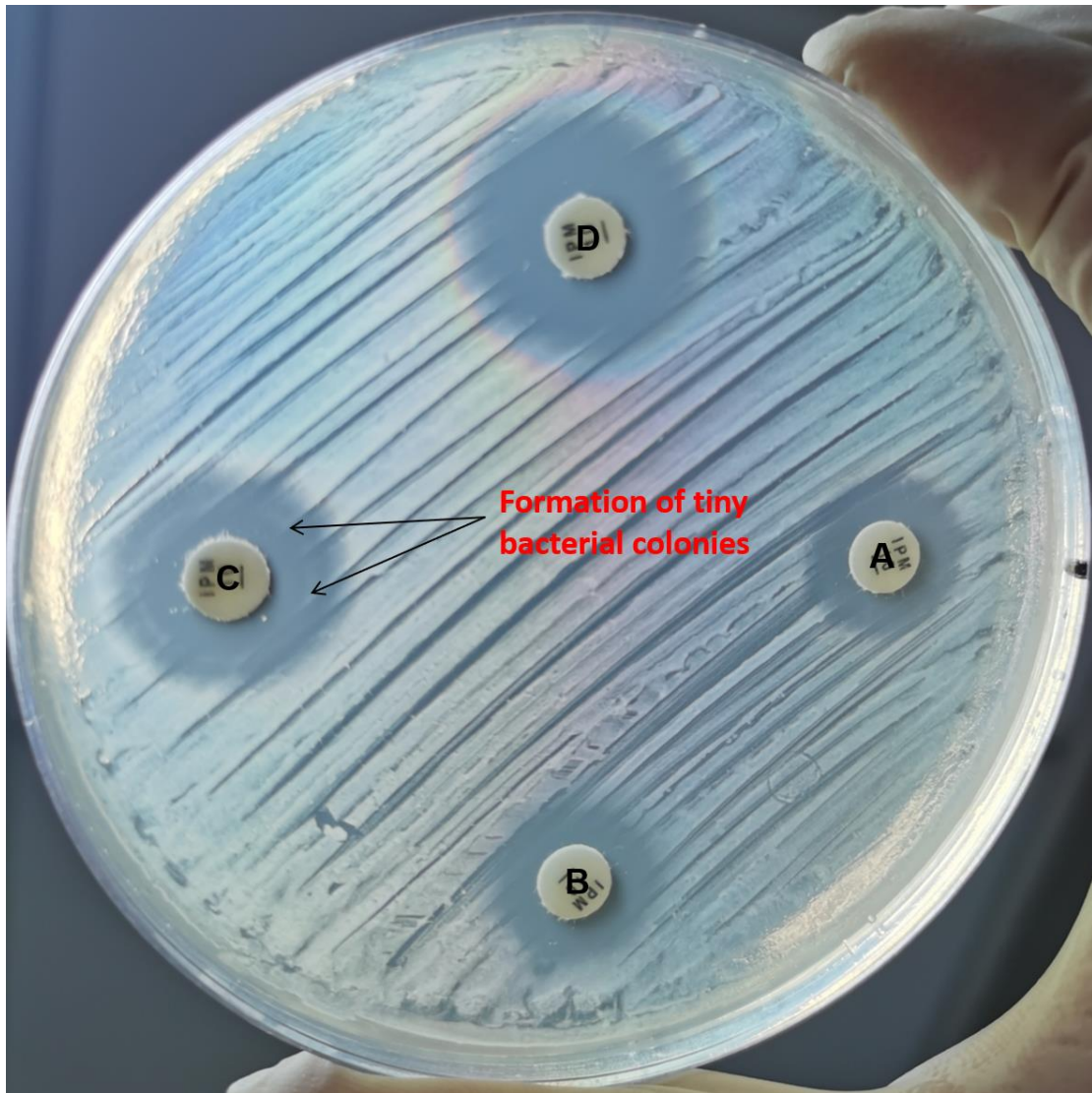


Fig. S1. Formation of very tiny bacterial colonies between the imipenem disk plus APB and apparent bacterial colonies. A – imipenem disk alone, B – imipenem disk plus 5 μ l EDTA, C – imipenem disk plus 5 μ l APB and D – imipenem disk plus 5 μ l EDTA and 5 μ l APB.